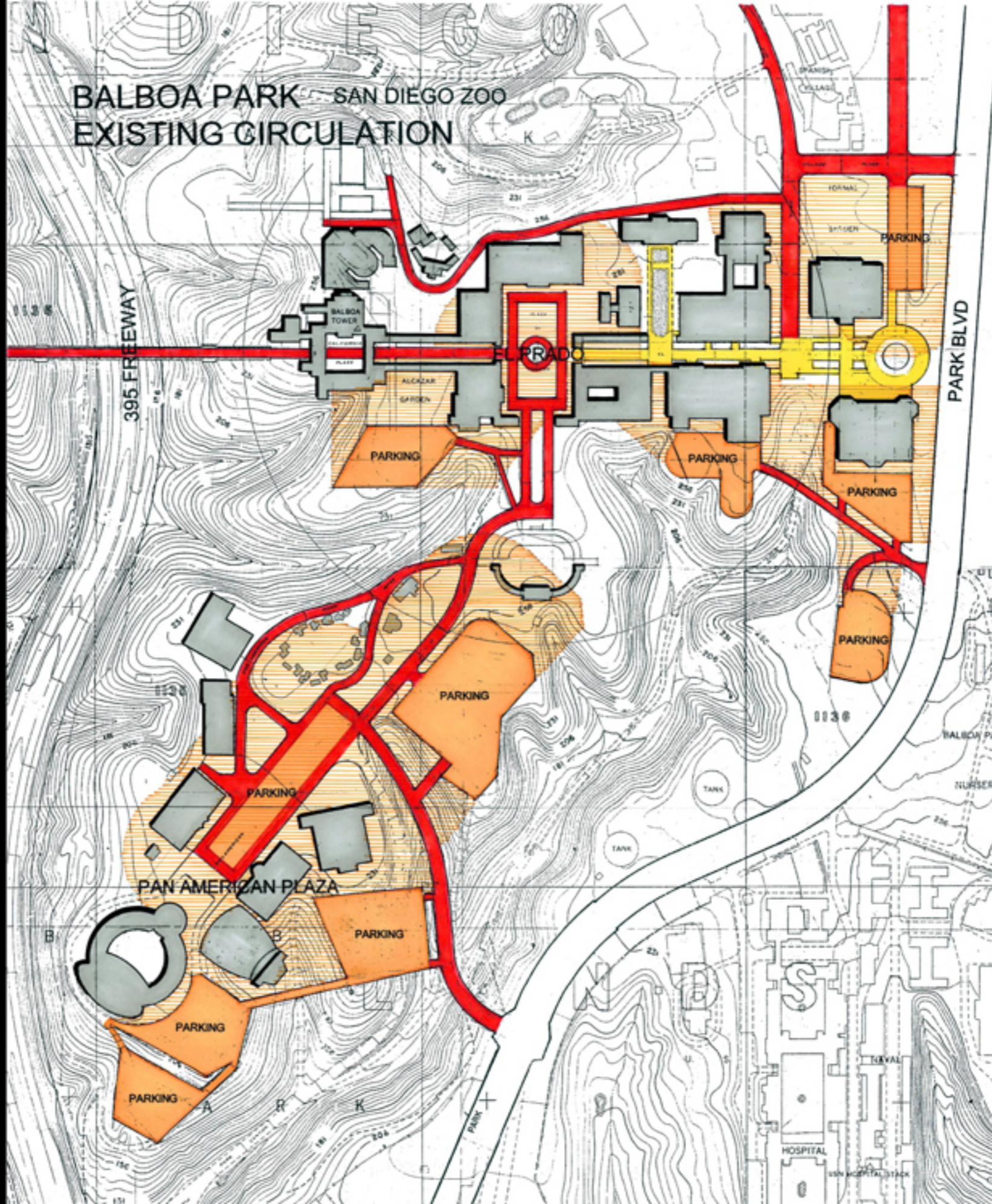
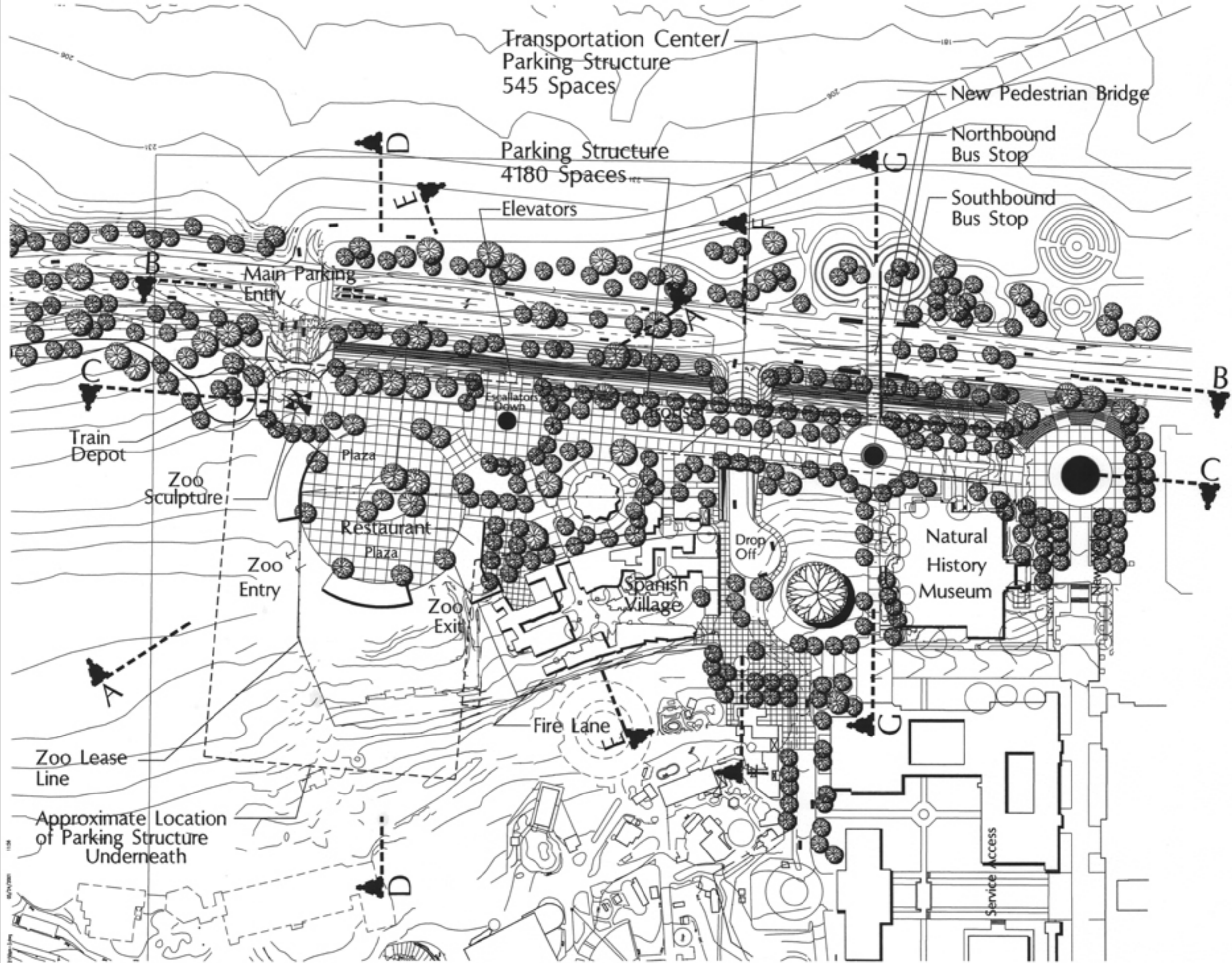


BALBOA PARK GOALS / 2015

- 1. RETAIN AND REINFORCE THE SPECIAL CLASSIC CHARACTER OF BALBOA PARK.**
- 2. ELIMINATE THE EXISTING VEHICULAR CIRCULATION AND PARKING WITHIN THE EL PRADO.**
- 3. PROVIDE A NORTH RIM ROAD WITH DIRECT ACCESS TO PARK BLVD. @ THE EAST AND 6TH AVENUE @ THE WEST.**
 - A. MINIMIZE EAST-WEST THROUGH TRAFFIC IN THE PARK.**
 - B. PROVIDE DIRECT VEHICLE ACCESS AND PUBLIC ENTRANCE TO THE OLD GLOBE THEATER COMPLEX.**
- 4. BALANCE THE PARKING NEEDS WITHIN THE PARK.**
 - A. LOCATE AN UNDERGROUND GARAGE AND SURFACE PARKING WITHIN THE PRADO FOR APPROX 650 CARS.**
 - B. PROVIDE HANDICAP PARKING IMMEDIATELY ADJACENT TO THE EL PRADO PLAZA.**
 - C. PROVIDE DIRECT ASSESS TO THESE PARKING FACILITIES FROM THE WEST RIM AND NORTH RIM ROADS.**
- 5. ELIMINATE THE PUBLIC PARK TRANSPORTATION AND ALLOW PRIVATE VENDERS TO PROVIDE INTERNAL TRANSPORTATION AS REQUIRED.**
- 6. PROVIDE A PEDESTRIAN PROMENADE THAT LINKS THE EL PRADO COMPLEX AND THE PAN AMERICAN PLAZA.**
- 7. REDESIGN/ UPGRADE THE PAN AMERICAN PLAZA, INCLUDING THE PARKING AREAS.**
- 8. PREPARE THE PARK FOR THE CENTENNIAL CELEBRATION.**
 - A. MASTER PLAN.**
 - B. ORGAN PAVILION.**
 - C. LANDSCAPE PARKING & ETC.**
 - D. GRAPHIC PACKAGE.**
 - E. PRO FORMA.**

BALBOA PARK - SAN DIEGO ZOO EXISTING CIRCULATION





Transportation Center/
Parking Structure
545 Spaces

Parking Structure
4180 Spaces

New Pedestrian Bridge

Northbound
Bus Stop

Southbound
Bus Stop

Elevators

Main Parking
Entry

Train
Depot

Zoo
Sculpture

Zoo
Entry

Restaurant
Plaza

Zoo
Exit

Spanish
Village

Natural
History
Museum

Drop
Off

Fire Lane

Zoo Lease
Line

Approximate Location
of Parking Structure
Underneath

Service
Access

ZOO PLACE

PARK BLVD.

EL. 285'

EL. 285'

20% SLOPE

EL. 278'

EL. 278'

EL. 295'

LIGHT WELL
PEDESTRIAN WALKWAY

POTENTIAL LOCATIONS FOR
A SECONDARY RAMP

LIGHT WELL

BUS PARKING

TAXI QUEUING

TRANSPORTATION CENTER

EL. 278'±

BUS PARKING

EMPLOYEE
ENTRY/EXIT

LOADING
DOCK

DOWN TO
P2, P3, P4

DN TO P2

EL. 283'±
PATRON PARKING

LIGHT WELL

PIA-140

PIH-133

PIG-133

PIF-134

PIE-51

PIO-47

PIC-43

PIB-39

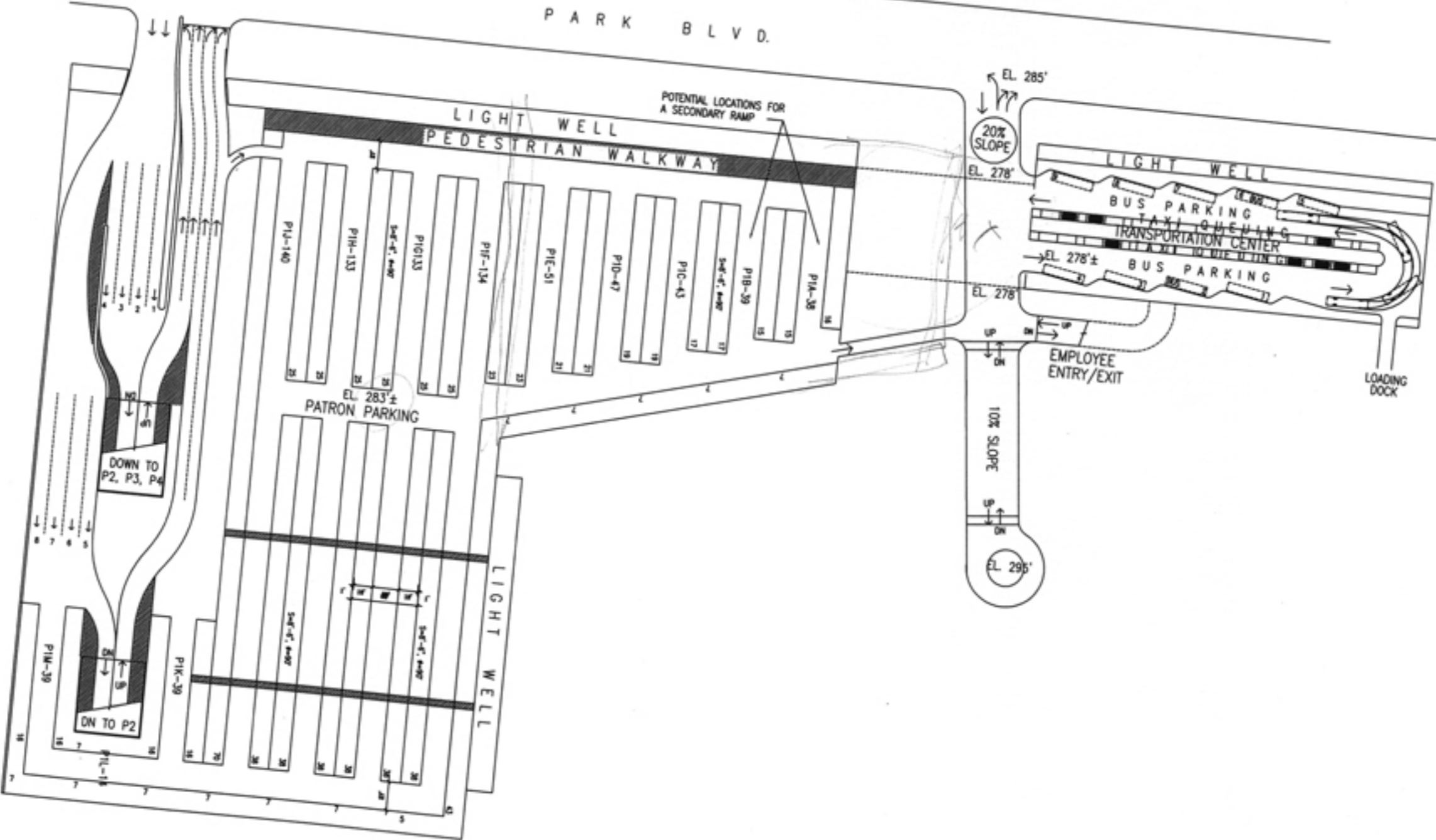
PIA-38

PIW-39

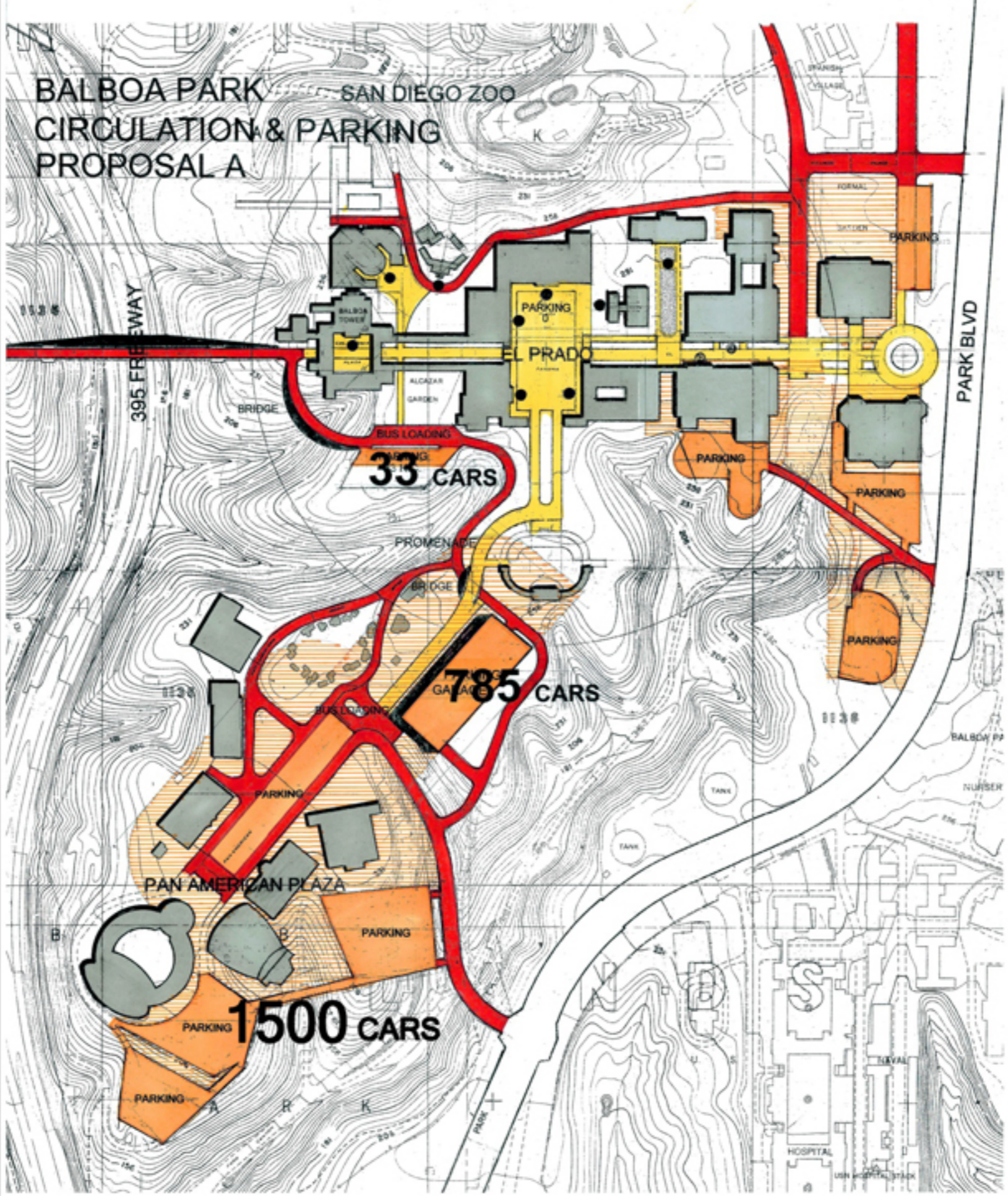
PIK-39

PIE-41

PIE-42



BALBOA PARK CIRCULATION & PARKING PROPOSAL A

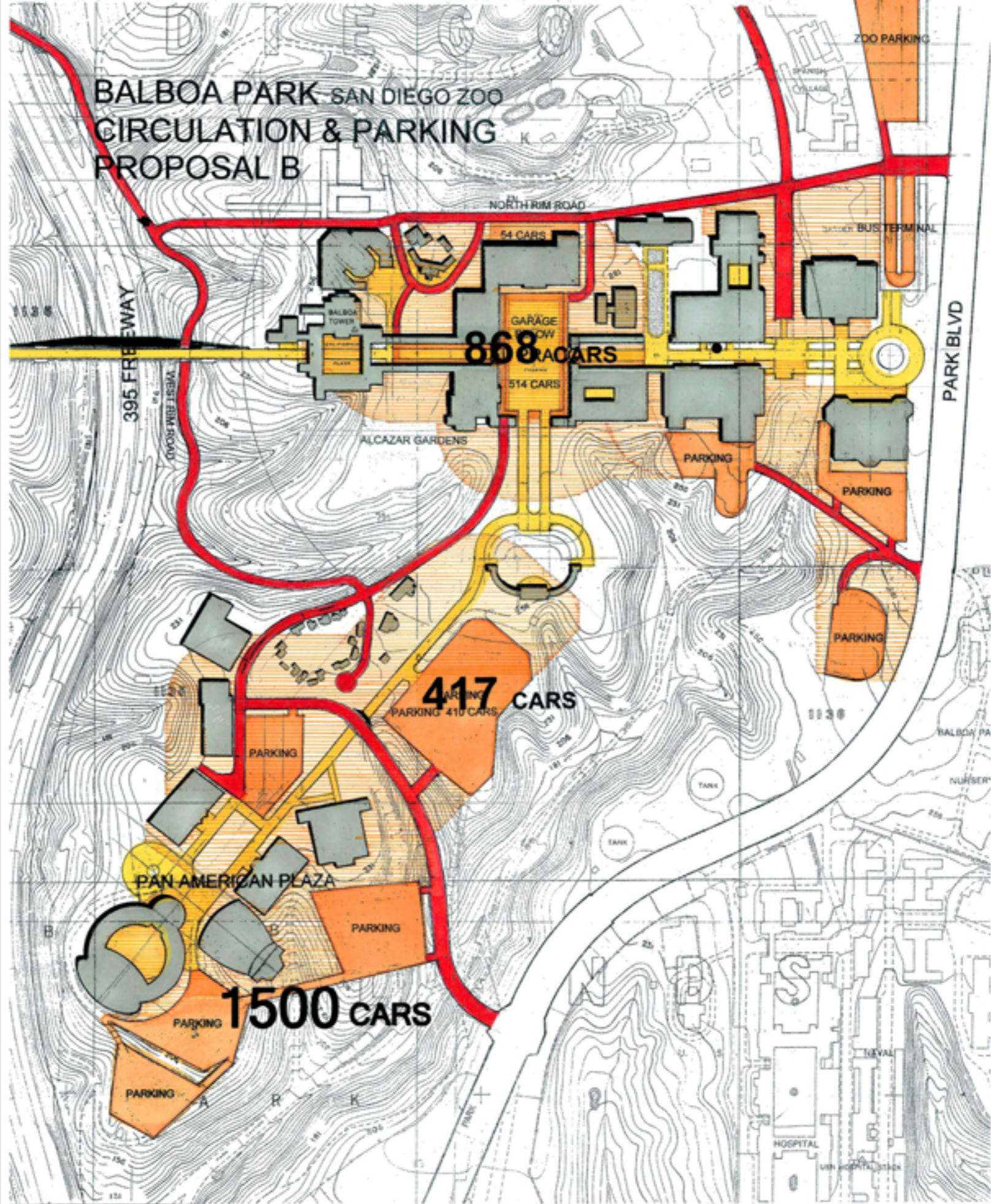


33 CARS

785 CARS

1500 CARS

BALBOA PARK - SAN DIEGO ZOO CIRCULATION & PARKING PROPOSAL B

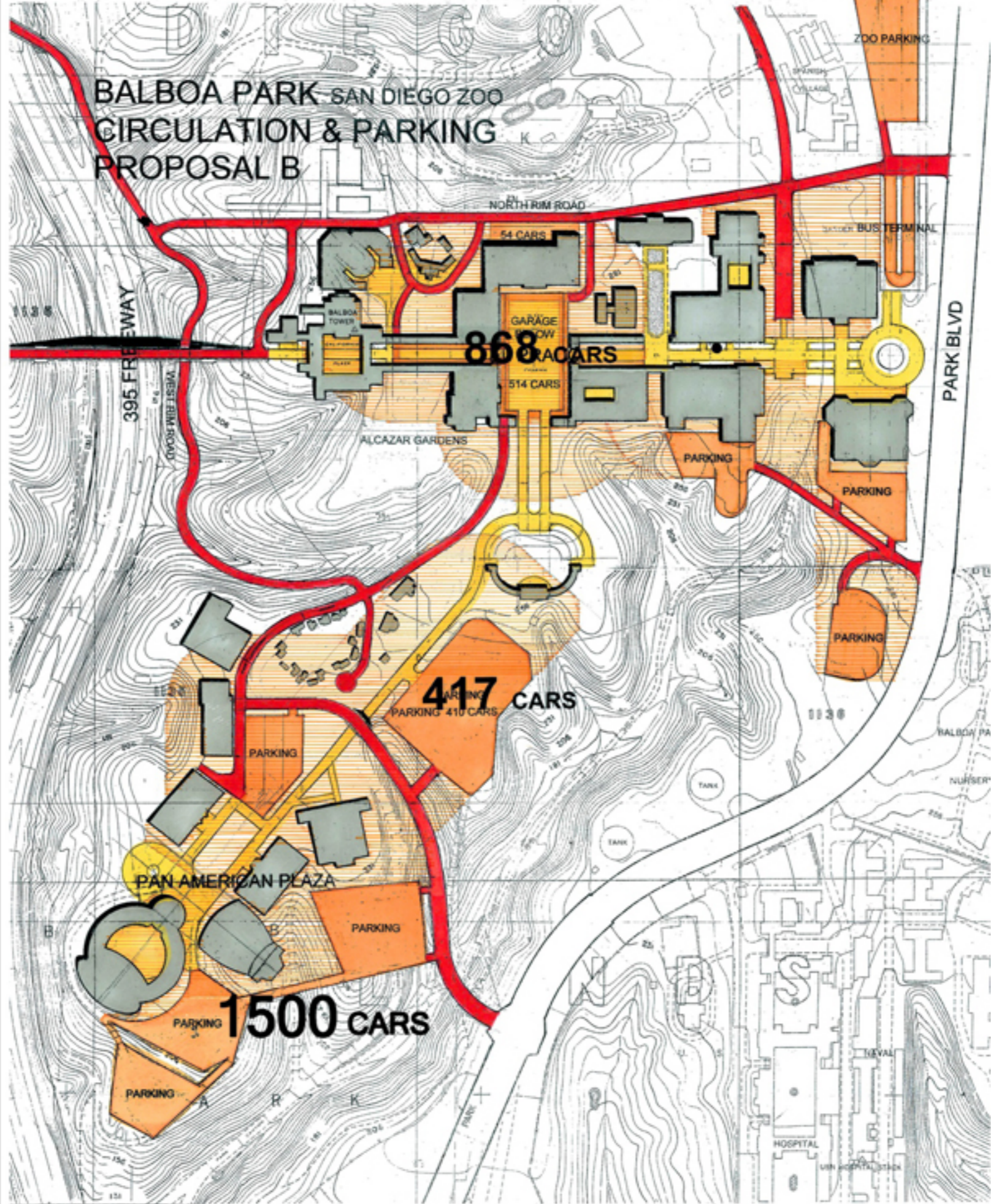


868 CARS

417 CARS

1500 CARS

BALBOA PARK - SAN DIEGO ZOO CIRCULATION & PARKING PROPOSAL B



868 CARS

417 CARS

1500 CARS

PAN AMERICAN PLAZA

NORTH RIM ROAD

395 FREEWAY

PARK BLVD

ZOO PARKING

BUS TERMINAL

54 CARS

514 CARS

ALCAZAR GARDENS

PARKING

PARKING

PARKING

PARKING

PARKING 410 CARS

PARKING

PARKING

PARKING

HOSPITAL

UNIVERSITY HOSPITAL

PARKING ANALYSIS

PARKING AREA

EXIST'G

PROPOSED

PROPOSAL **A**

EL PRADO PLAZA
ALCAZAR GARDEN
ORGAN PAVILION
TOTAL

54
136
367
557

0
33 / HC
785
818 w/ 33 HC

YIELD.....**261 CARS**

PROPOSAL **B**

EL PRADO PLAZA
ALCAZAR GARDEN
ORGAN PAVILION
NORTH RIM ROAD
TOTAL

54
136
367
0
557

797 w/ 23 HC
8 w/ 2 HC
417
63 w/ 8 HC
1285 w/ 33 HC

YIELD.....**728 CARS**

PARKING GARAGE YIELD/COST COMPARISON

	YIELD		COST	
A	PRADO 33 CARS GARAGE 798 CARS		\$24,600,000	\$4,500,000/YR
3 LEVELS	537 CARS	261	GARAGE \$20,400,000	BRIDGE \$4,200,000 BONDS BUSES
Bx	PRADO 893 CARS GARAGE 819 CARS		\$17,600,000	ROAD \$700,000
3 LEVELS	69	750 CARS	GARAGE \$16,900,000	SAVINGS \$7,000,000
By	PRADO 640 CARS GARAGE 566 CARS		\$14,400,000	ROAD \$700,000
2 LEVELS	69	497 CARS	GARAGE \$13,700,000	SAVINGS \$10,200,000
Bz	PRADO 403 CARS GARAGE 329 CARS		\$11,100,000	ROAD \$700,000
1 LEVEL	69	260	\$10,400,000	SAVINGS \$13,500,000

**BALBOA PARK / 2015
B2 PROPOSAL**

SAN DIEGO ZOO

NORTH RIM ROAD

EL PRADO

ALCAZAR GARDENS

ORGAN PAVILION

PAN AMERICAN PLAZA

SITE PLAN

395 FREEWAY

PARK BLVD

PARKING

PARKING

PARKING

PARKING

PARKING



BALBOA PARK / 2015
B1 PROPOSAL

SAN DIEGO ZOO

NORTH RIM ROAD

EL PRADO

ALCAZAR GARDENS

ORGAN PAVILION

PAN AMERICAN PLAZA

PARK BLVD

395 FREEWAY

SOUTHERN BLVD

PARKING

PARKING

PARKING

PARKING

PARKING

SITE PLAN



BALBOA PARK / 2015

SAN DIEGO ZOO

NORTH



395 FREEWAY

PARKING

ALCAZAR GARDENS

ORGAN PAVILION

SOUTH RIM ROAD

PARKING

PARKING

PAN AMERICAN PLAZA

PARKING

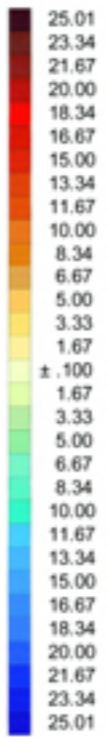
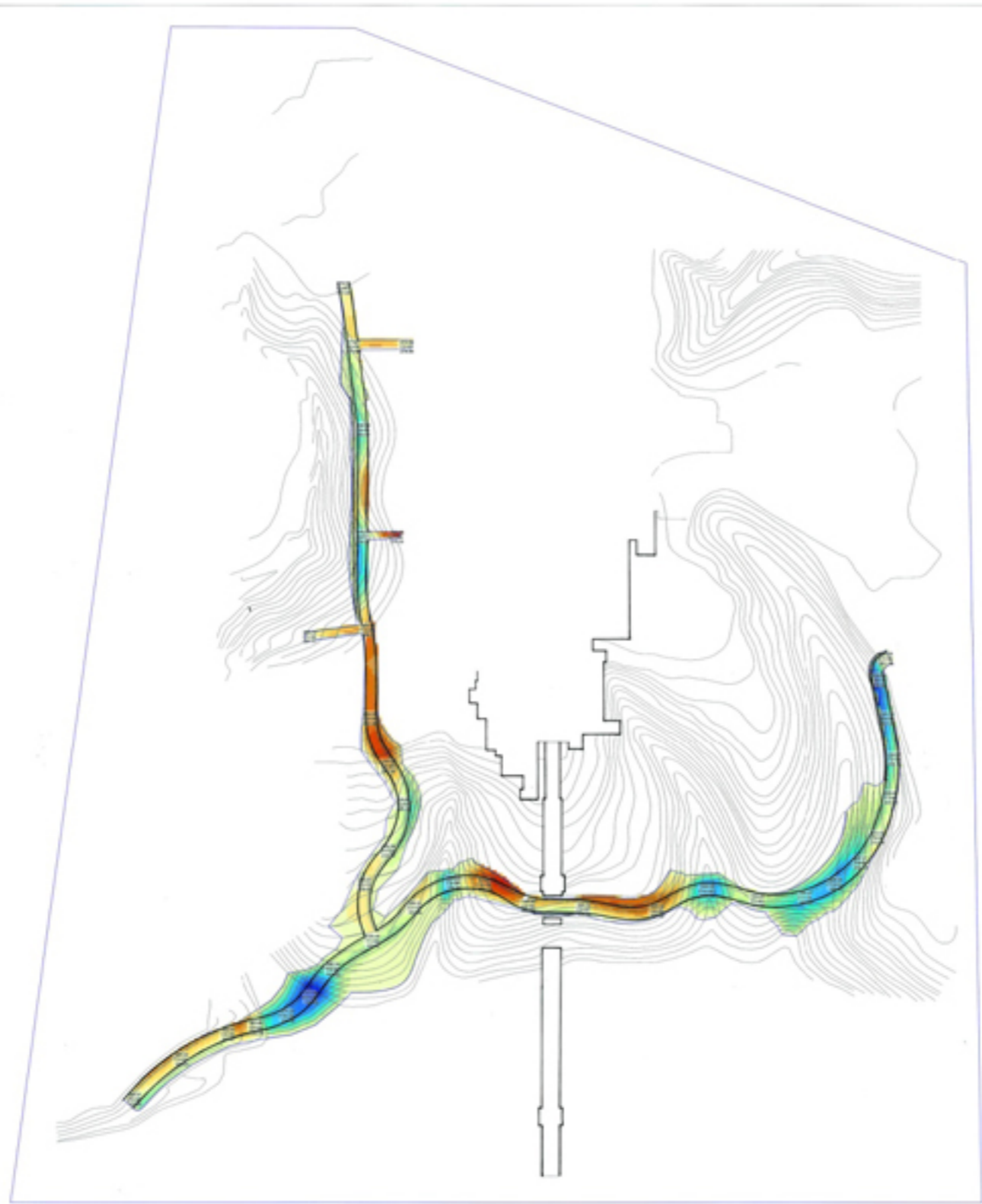
PARKING

PARKING

SITE PLAN







Job: Balboa Park, Plan A
 Units: Ft-CY
 Wed May 09, 2012 10:52:17 Page 1

Volume Report
Design vs. Existing

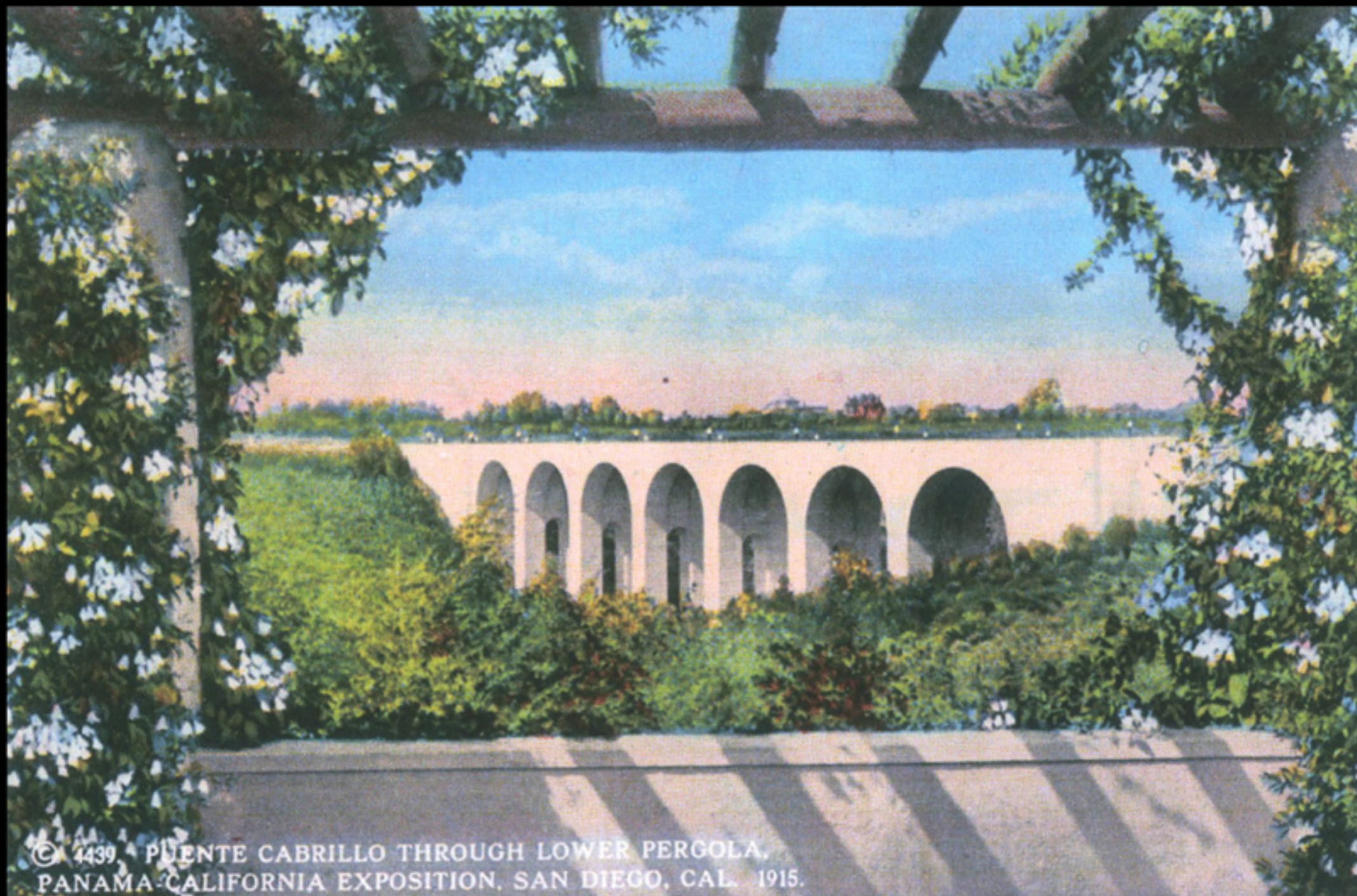
Job Site	Total	Area		OnGrade	Volume		Comp/Ratio		Compact		Export -Import	Change Per .1 Ft
		Cut	Fill		Cut	Fill	Cut	Fill				
Job Site	58,886	21,963	30,810	6,113	3,701	6,533	1.00	1.00	3,701	6,533	-2,832	218

Balboa Park, Plan A

Hazard







© 4439 PUENTE CABRILLO THROUGH LOWER PERGOLA,
PANAMA-CALIFORNIA EXPOSITION, SAN DIEGO, CAL. 1915.



ACOUSTICAL ANALYSIS @ THE OLD GLOBE

SOUND COMPARISON*

NO WALL	10' WALL	15' WALL	20' WALL
1. 59.0 d BA	1. 49.4 d BA	1. 45.9 d BA	1. 43.9 d BA
2. 57.5 d BA	2. 51.2 d BA	2. 48.7 d BA	2. 47.0 d BA
3. 56.8 d BA	3. 50.9 d BA	3. 48.8 d BA	3. 47.4 d BA
4. 55.4 d BA	4. 53.3 d BA	4. 51.7 d BA	4. 50.8 d BA

*NOISE GENERATED PER HOUR @ 25 MPH FROM
 400 CARS
 10 MEDIUM TRUCKS
 10 HEAVY TRUCKS
 NOT INCLUDED:
 AIRCRAFT
 MOTORCYCLES - 10 d BA INCREASE
 ZOO ANIMALS & BIRDS

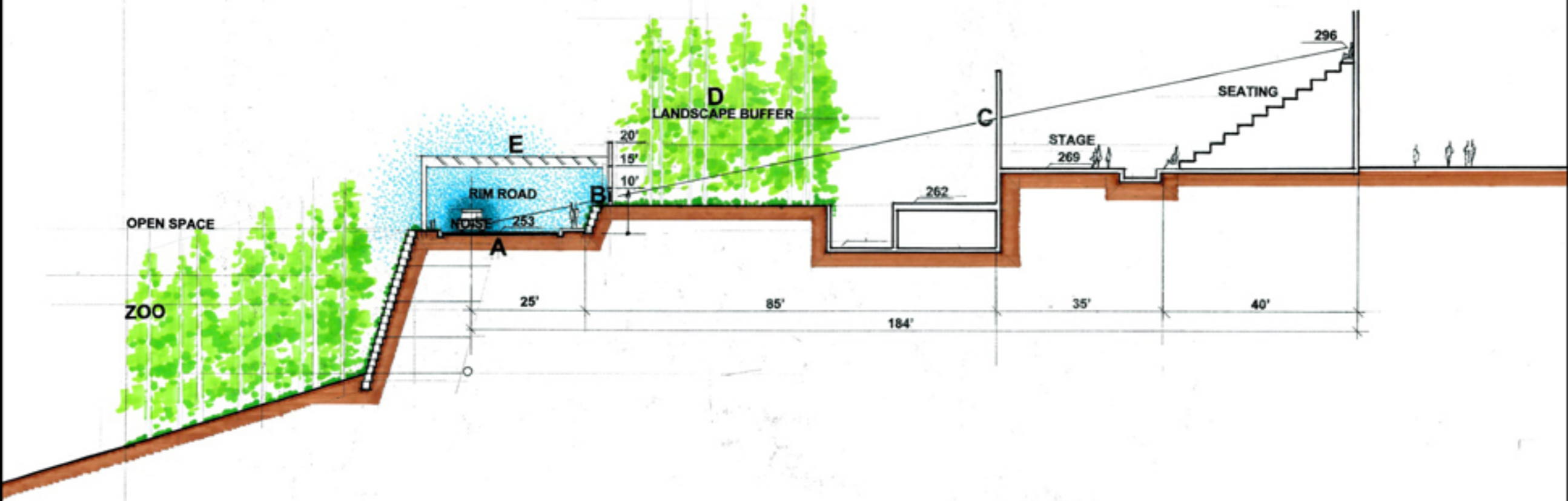
CURRENT AMBIENT NOISE @ 8:30 PM
 47 d BA52 d BA
 W/O AIRCRAFT

ADDITIONAL SOUND REDUCTION OPTIONS

- A RUBBERIZED ASPHALT ROAD SURFACE
- B SOUND MASKING - SPEAKER SYSTEM @ ROAD
- C STAGE WALLS - NO VOIDS
- D LANDSCAPE BUFFERS
- E ACOUSTICAL TRELLIS
- F SPEED REDUCTION 3 dBA REDUCTION @ 15 MPH

LIGHT MASKING

- RIM ROAD ILLUMINATION
- TREE LIGHTING



SECTION THRU THEATER

OLD GLOBE THEATER

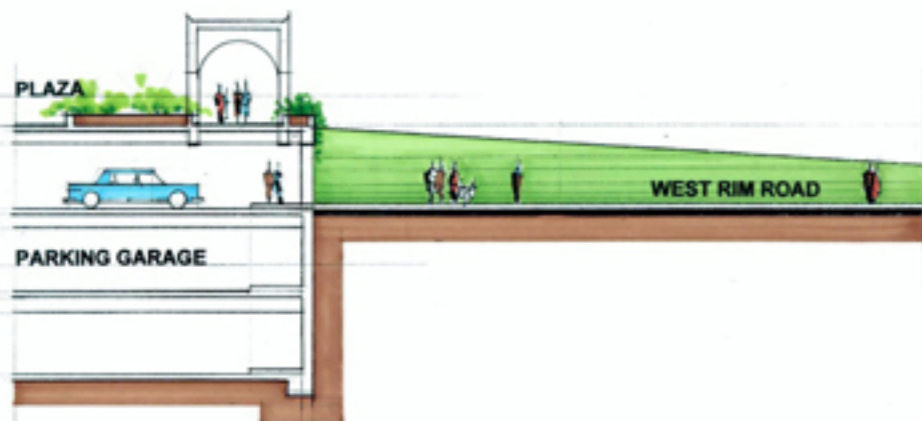


SITE PLAN

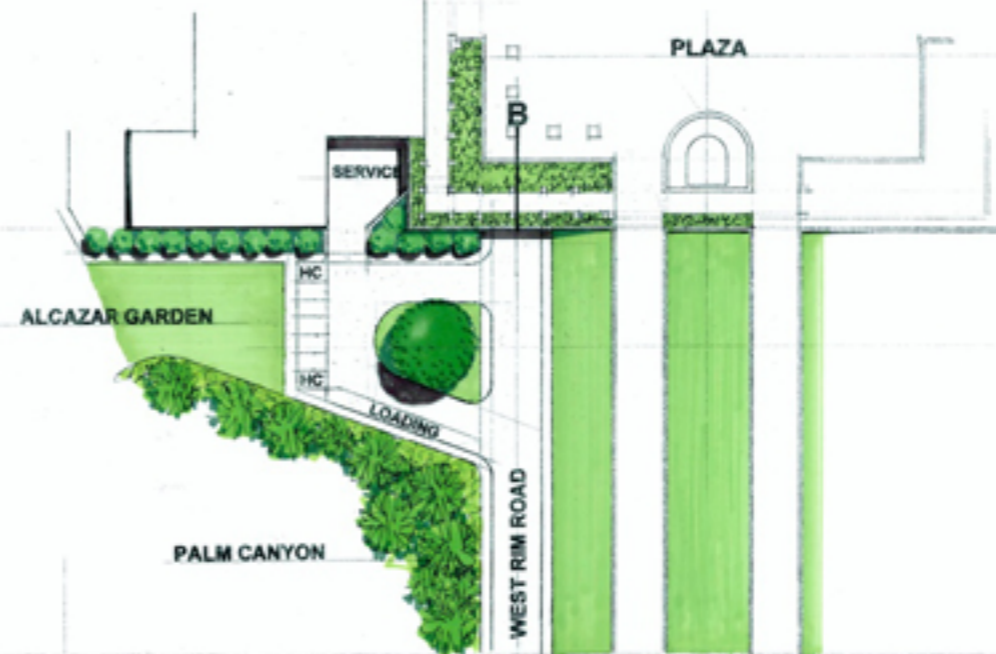
GARAGE ENTRIES



SECTION A @ GARAGE ENTRY

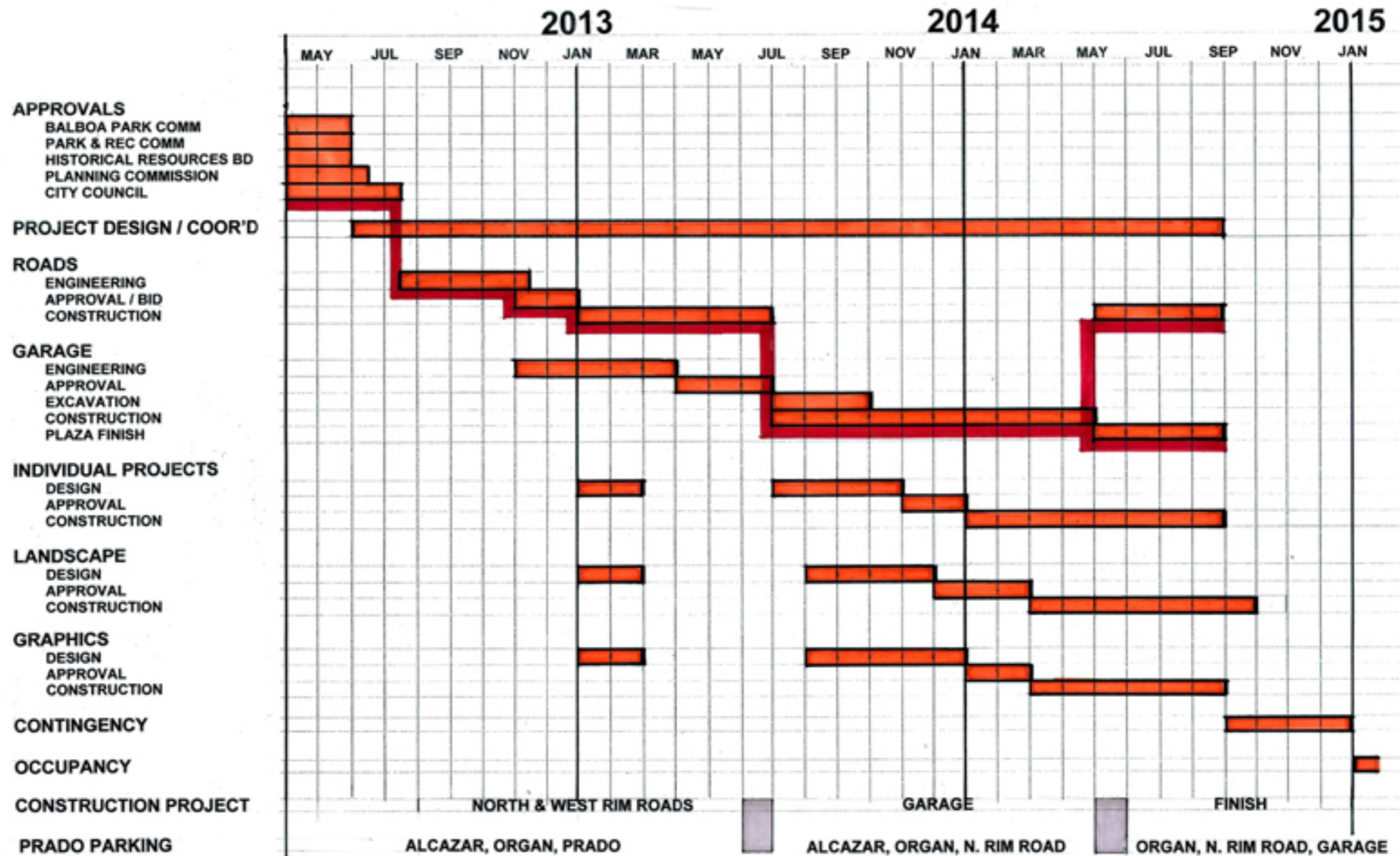


SECTION B @ GARAGE ENTRY



PLAN

PROJECT SCHEDULE



PROPOSAL A AND B COMPARISON

A B COMPARISONS

- ● • RESTORE THE PRADO PLAZA AND MALL
- ● • REMOVE VEHICLE CIRCULATION FROM THE PRADO
- ● • RESTORE ALCAZAR GARDEN
- ● • RESTORE THE WEST ENTRY IMAGE
- ● • PROVIDE ADEQUATE / ACCESSIBLE PARKING TO PRADA
- ● • ADD SEMI-VISIBLE PARKING STRUCTURE AND MINI PARK
- ● • COMPLETE NORTH RIM PERIMETER ROAD
- ● • RESTORE THE PAN AMERICAN PLAZA
- ● • REMOVE VEHICULAR CIRCULATION FROM PAN AMERICAN PLAZA
- ● • BRIDGE VEHICULAR CLOSURE OPTION
- ● • QUINCE STREET OPTION
- ● • COST EFFECTIVE, INITIAL AND LONG TERM
- ● • CONSTRUCTION PHASE, PARKING SHUT DOWN
- ● • NATIONAL HISTORICAL LANDMARK

BALBOA PARK / 2015 CENTENNIAL DESIGN TEAM

PROJECT PLANNING & DESIGN:
WILLIAM. S. LEWIS, FAIA
HYNDMAN & HYNDMAN, ARCHITECT

TRANSPORTATION ENGINEERING:
LINDSCOTT LAW & GREENSPAN

GARAGE ENGINEERING & CONSTRUCTION:
T.B. PENICK & SON INC

FIRE:
SCOTT FRANKLIN & ASSOCIATES

HYDROLOGY:
TORY R. WALKER ENGINEERS

LANDSCAPE:
ARCHITECTURAL LANDSCAPE

ROAD CONSTRUCTION / DESIGN:
HAZARD CONSTRUCTION

ACOUSTIC / NOISE:
LDN CONSULTING

WATER FEATURES:
ARCHPAC

HISTORICAL:
BRUCE COONS

BIOLOGY:
BRIAN SMITH & ASSOCIATES

FLOWERS:
EURO / AMERICAN

SAN DIEGO 1916 EXPOSITION

DEDICATION
MARCH 18TH

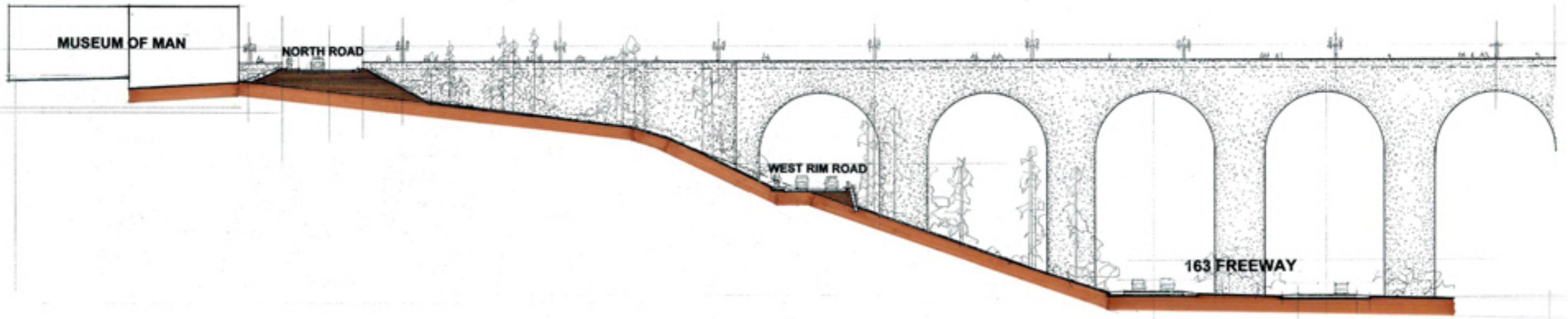


NEW INTERNATIONAL
EXPOSITION

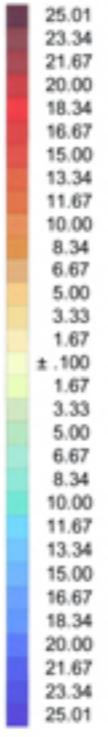
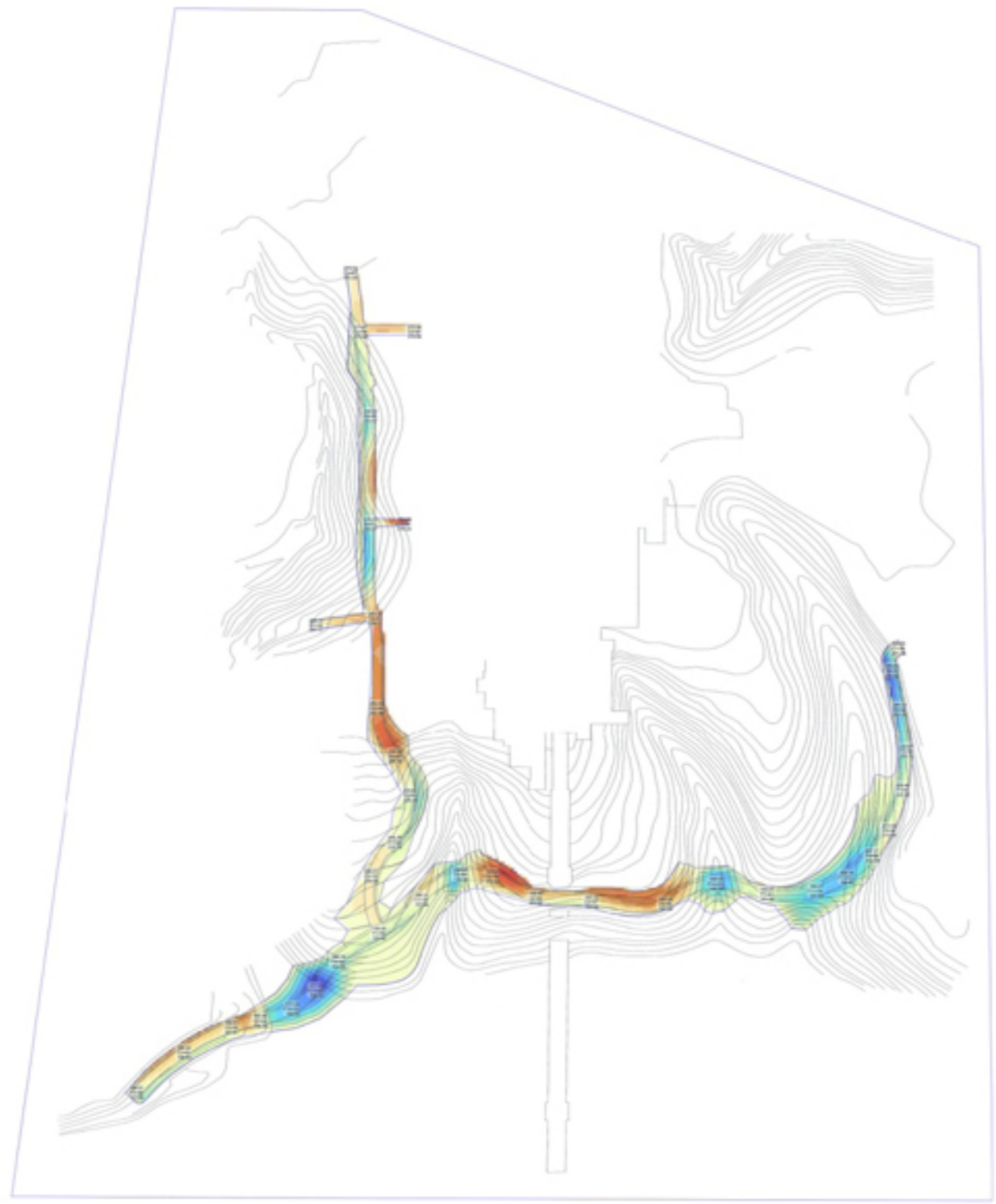
SAN DIEGO 1916 EXPOSITION

DEDICATION
MARCH 18TH





SECTION @ BRIDGE



Job: Balboa Park, Plan A
 Units: Ft-CY
 Wed May 09, 2012 10:52:17 Page 1

Volume Report
Design vs. Existing

Job Site	Total	Cut	Area		Volume		Comp/Ratio		Compact		Export	Change
			Fill	OnGrade	Cut	Fill	Cut	Fill	Cut	Fill		
Job Site	58,886	21,963	30,810	6,113	3,701	6,533	1.00	1.00	3,701	6,533	-2,832	218

Balboa Park, Plan A

Hazard